



www.hospitalssystem.com

Installation Instructions

Tel: 925.427.7800

Fax: 925.427.0800

support@hospitalssystem.com

Hospital Systems Inc.
750 Garcia Avenue
Pittsburg CA 94565
USA

Headwall Component of the Herman Miller Compass System



Introduction:

The Hospital Systems, Inc./Herman Miller Compass Headwall is made to order for this project; illustrations in this booklet are examples and will not match the configuration for this specific project. Each headwall consists of a pair of horizontal wall mounting rails, one or more pre-piped and prewired headwall component section, finish tiles, chase cover and device coverplates.

Before attempting to install, please read and understand all of the instructions as well as Herman Miller Planning Guide for Compass Installation. In particular please refer to the final approved submittal drawings as they will take precedence over these instructions

Basic Steps for Installing the Compass™ Headwalls

- Prepare stud wall to accommodate headwall
- Mount the blocking material to the studs. Size and gauge noted herein are minimum requirements. Please check with the structural engineer to see if additional blocking is required
- Install the Horizontal Wall Rail
- Hang the headwall onto the Wall Rail, level, align and correctly space the headwalls
- Install lock down bracket set
- Connect the services
- Test the electrical and medical gas components
- Install the tiles, coverplates, Closeout sides, top and bottom,
- Install the service chase [for units that terminate above ceiling]
- Clean the headwall



Do NOT use powered screwdrivers on devices or coverplates. Stripped holes or screw heads are NOT covered by warranty

Preparation of the stud wall

[To be completed by installing contractor]

Determine the height and centerline for the headwall from the approved submittal drawings and the contract drawings. Attach a 6" steel backer, 16GA. horizontally at 69" C_L and 33¹/₈" C_L above the floor. Extend the backing to the next stud. See Figure 1 for detail.



Walls to be constructed of 20 GA. MIN. steel studs on 24 inch MAX. centerlines with 5/8" MIN. dry wall."

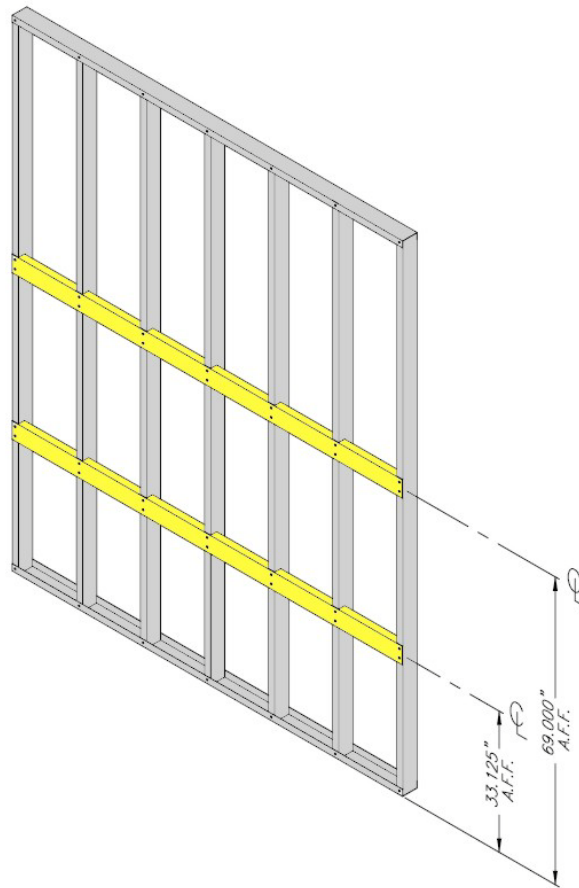


Figure 1

Install dry-wall and finish. The next step commences after the wall, floor and other room finishes are in place.

Install Wall Rail and Compass Headwall

[To be completed by Herman Miller trained installers]

Install Wall Rail

Install the upper rail at 69" C_L and the lower rail at 33 1/8" C_L above the floor. Check the drawings for horizontal location of these rails. These rails must be within a 1/16" tolerance and be level. Recommended fasteners: #10-1 1/4 SMS Tapping or Toggler P/N 25013 or equal toggle bolts. Fasteners every 6" and within 1/2" of each free end of the rail.



We advise that you do not use the floor as a level reference. While the use of a long level is possible, we advise that a laser level be used.

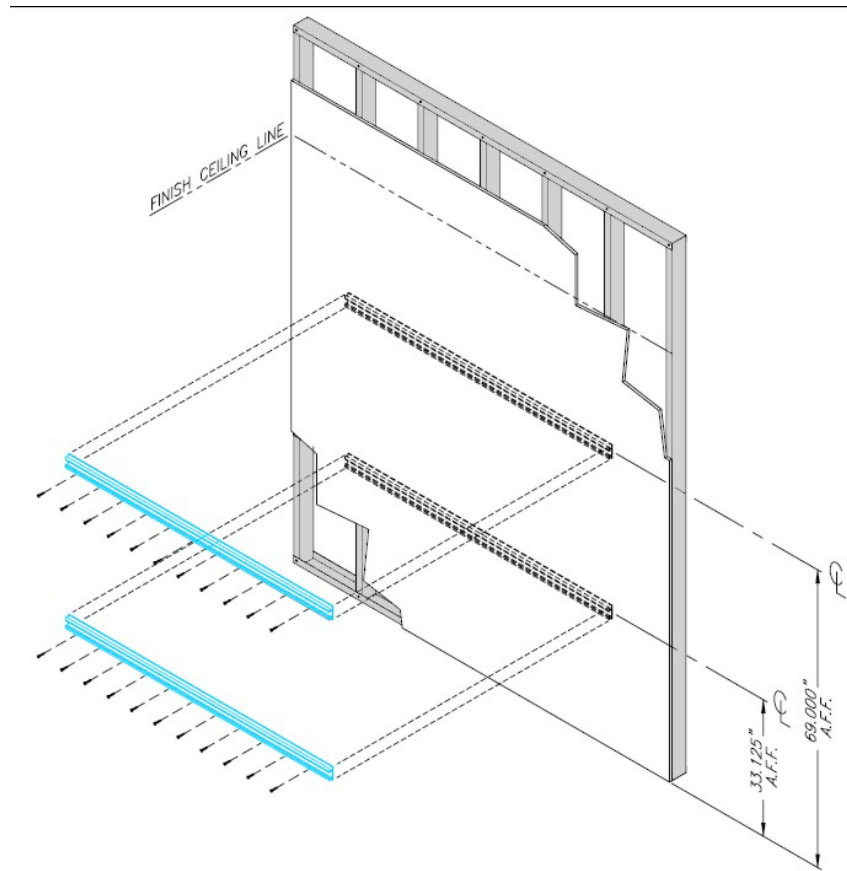


Figure 2

Install the Headwall

Installation Instructions for the Compass Headwall [CompInst-1]

©2010 Hospital Systems, Inc., ALL RIGHTS RESERVED

Page 4 of 7

Remove the Stile antidislodgement bracket from each stile [Refer to detail A, Figure 4] [Do not discard]. Remove the headwall section from the carton and hang it on the Wall Rails. Be sure that the hooks on the back of the stiles engage the Wall Rail. Start with the most left hand section and work your way to the right [see Figure 3]. Re-install the Stile antidislodgement bracket on each stile [See Figure 4]. **Note: these are installed on the component side of the stile.** At this time leave approximately 4" between headwall sections.

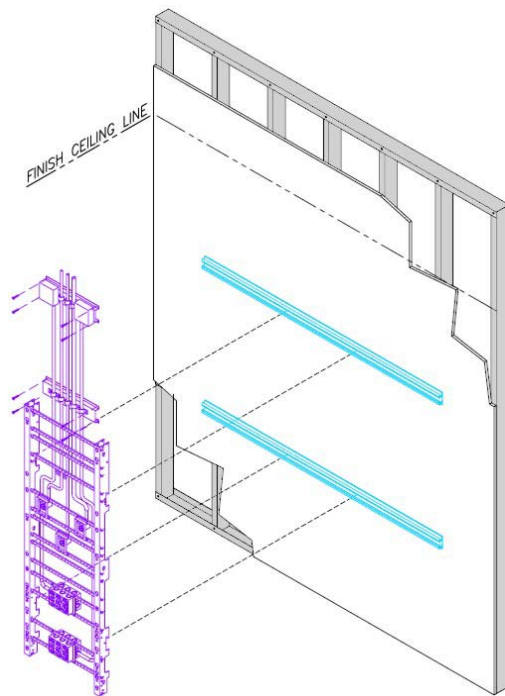
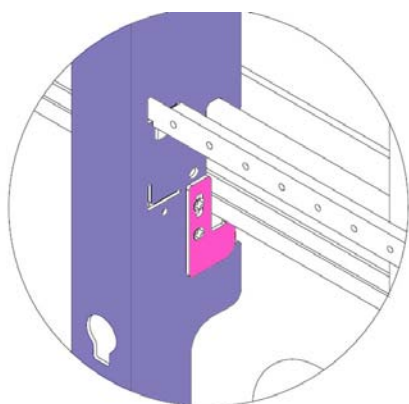


Figure 3



DETAIL-A

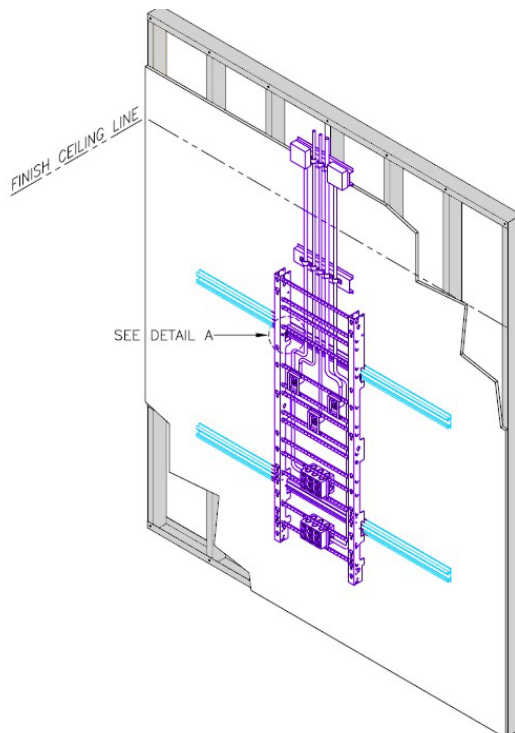


Figure 4

Locate the center section so that the Center Line of the center section matches the Center Line of the bed location. If this is a single section installation, locate the headwall as shown on the contract drawings. Re-attach the antidislodgement bracket [as shown in Detail A/Figure 4]. These brackets should be on the side of the stile toward the center of the headwall section. Install the Lockdown Bracket kit to keep the headwall section from moving laterally; only one set of Lockdown Brackets are necessary for a multisection headwall.

If there is more than one section, continue until all of the sections are hung onto the Wall Rails and the antidislodgement bracket are installed.



Follow Herman Miller procedure for leveling and spacing units.

Once headwall sections are leveled, plumbed, and locked in position, attach the piping/conduit support brackets to the dry-wall using Toggler P/N 25013 or equal toggle bolts.

Connecting the Medical Gas Lines

[To be completed by Mechanical Contractor]

The Medical Gas Lines are pre-piped, test, and capped at the factory to the junction area above the ceiling line. The Mechanical Contractor should connect the headwall piping to the distribution system. The headwalls are stubbed with ½" ID lines for Oxygen and Medical Air, and ¾" ID for Vacuum. NFPA guidelines for Medical Gas Piping must be followed.

Connecting the Electrical and Communication Conduit and Wiring

[To be completed by Electrical Contractor]

The electrical circuits [120V normal, 120V critical/emergency and 277V switch legs] are prewired and tested. Wiring is terminated in appropriately marked junction boxes at the junction area above the ceiling line. The Electrical Contractor can connect to the junction boxes and connect the wiring. Communication wiring, i.e. Nurse Call or Data/Telephone should be run through the junction boxes and directly to the required backbox. Pull strings are provided for ease of pulling the cables.

Testing

Medical gas lines should be tested before any covers are placed on the headwalls.

Electrical testing can be completed either before or after covers are installed

Nurse Call and other low voltage systems should be tested after the covers are installed.

Installing the Tiles, Coverplates and Accessories

[To be completed by Herman Miller trained installers]

The installer will remove coverplates and the medical gas latching covers before installing the tiles. Tiles are installed sequentially starting from the bottom by lining up the button studs on the back of the tiles with the 'keyhole' in the stiles. The tiles will drop down in the keyhole and lock into place. Device coverplates and medical gas latching covers are re-installed. Side and bottom close-outs will then be installed. The top close-out is field cut to allow the pipe and conduit to protrude when installed and should be installed to each specific headwall. A chase cover, which has been painted to match the dry-wall finish, is installed over the pipe and conduit.

Cleaning

Use a soft cloth with non-abrasive cleaner (i.e. 409 or Windex) to remove dirt and fingerprints.



Note to Herman Miller Installers

Please follow the installation instruction for installation that come with the COMPASS guide.

